

No. 307

Date 02/06/02

Another addition to the expanding line of Webb products.

NEW PRODUCT BULLETIN

Part Number: **4653 "PLATINUM SERIES" ALUMINUM HUB**

(Uses .75 Drive Stud)

DESCRIPTION:

10 Stud Hub - 11.25" (285.75mm) Bolt Circle
Uses Outboard Drum - Serrated Stud

WEIGHT:

21 lbs. Hub Only
36 lbs. Hub, Cups and Studs

WEBB AXLE GROUP 23

OUTER BEARING CUP 572 ←
CONE 580 ← Cup Code 1
INNER BEARING CUP 592A ←
CONE 598A or 594A ←

AVAILABLE

NOW

APPLICATION INFORMATION

TRUCK DRIVE AXLE

Drawing Reference	Item	Dimension
B	Overall Length	8.97
C	Outer Hub Cap Face to Inner Cup Seat	6.90
D	Distance Between Cups	4.31
E	Inner Cup to Mounting Face	
	Cast Drum (0.50 Back Plate Thickness)	1.81
	Platinum Drum (0.25 Back Plate Thickness)	1.55
F	Bolt Circle Diameter	11.25" (285.75mm)
G	Wheel Stud Qty./Thread Diameter	(10) M22x1.5
H	Drive Stud Hole Pattern	8 Holes 0.75 Dia. 7.00 Dia. Bolt Circle

WEBB AXLE GROUP 23

Dana Spicer.....(Short Drive) J-220, J-230, J-380
.....J-400, M-220, M-230, N-400, W-230, W-460
Navistar.....(Short Drive) RA35, RA47, RA57
ArvinMeritor.....(Short Drive) RC-22-145, RS-21-145,
.....RS-21-160, RS-21-180, RS-23-160, RS23-161,
.....RS-23-180, RS-23-240, RS-23-380, RS-24-160,
.....RS-24-161, RS-26-160, RS-26-161, RS-26-180,
.....RS-26-380, RT-40-145, RT-44-145, RT-46-160,
.....RT-48-180, RT-48-380, RT-52-160, RT-52-380

I. ABS RING

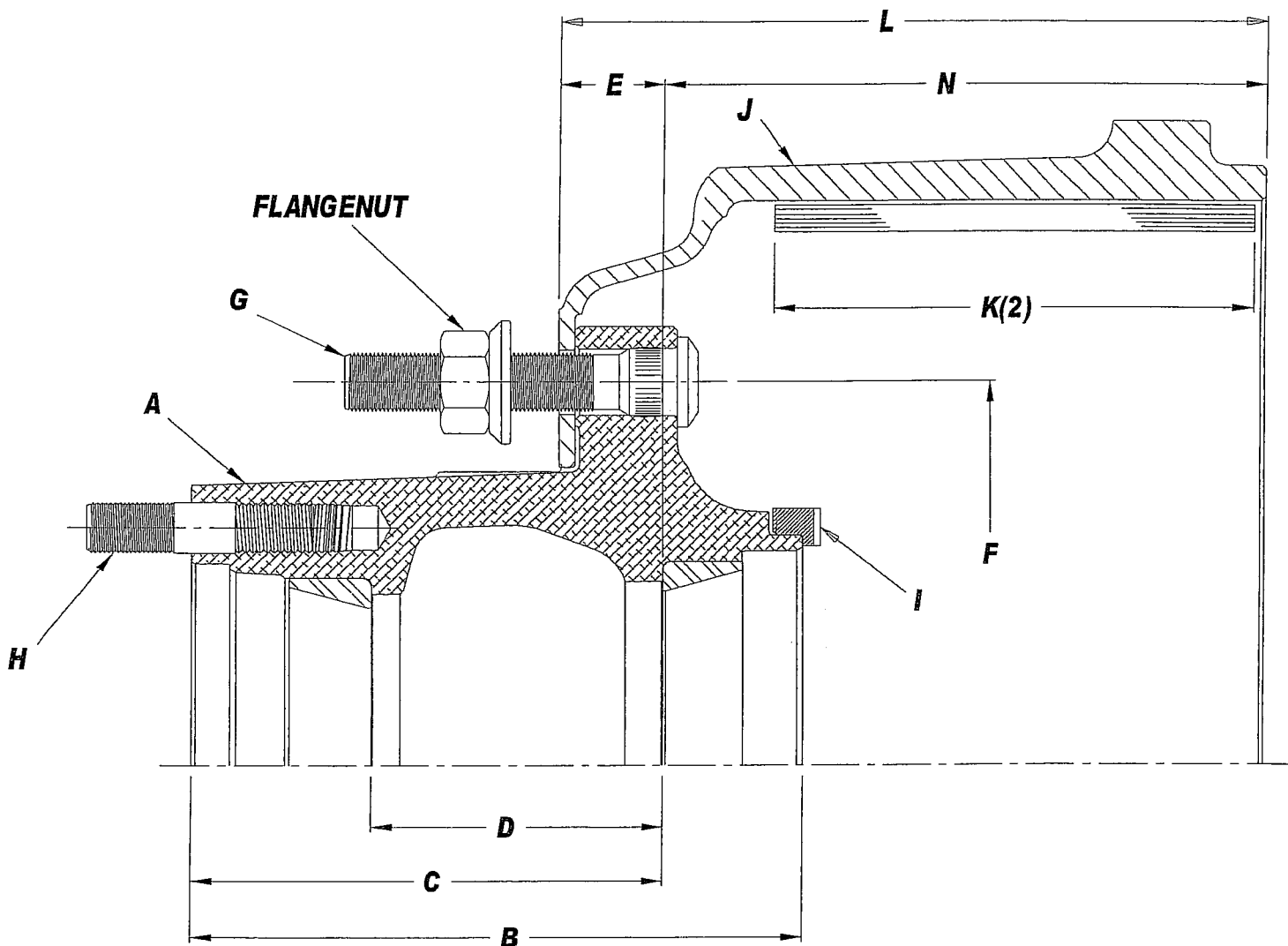
Part Number: 51294
Pitch Diameter: 6.90
Cup Seat to Face Dimension: 2.33

BRAKE DRUM INFORMATION

J		Estimated Drum Weight	Special Information	K		L	M	N
Order Code Part No.	Balanced			Brake Size (1) Dia.	(2) Width	Drum Overall Depth	Drum Pilot Dia.	Cup to End of Drum
61577	RP	108		15.00	7.00	10.59	8.78	8.78
66661	MH	128	Extra Heavy Duty Drum	16.50	7.00	10.37	8.78	8.56
66864	RK	106	Heavy Duty Drum	16.50	7.00	10.62	8.78	8.81
66884	RH	118	Extra Heavy Duty Drum	16.50	7.00	10.62	8.78	8.81
60864	ZQ	91	Platinum Series Drum	16.50	7.00	10.37	8.78	8.85
67486	WC	106	Centrifuse® Drum	16.50	8.62	12.15	8.78	10.59
66814	DV	131	Requires Special Brake Centerline	16.50	8.62	12.39	8.78	10.58
66871	DM	171	For use with Grease Slinger	16.50	10.00	13.19	8.78	11.38
66800	MU	126	8" Brake on 7" Centerline	16.50	8.00	11.10	8.78	9.23
66854	JA	128	8.62" Brake on 7" Centerline	16.50	8.62	11.46	8.78	9.59

This hub designed for dual wheel mounting or single wheels with 1/2" maximum offset.

WEBB WHEEL PRODUCTS, INC.
2310 Industrial Drive, S.W.
Cullman, Alabama 35055
(256) 739-6660 FAX (256) 739-6246



ASSEMBLY DRAWING

List of Components			
Item	Part No.	Description	Qty.
1	4653	Hub, 10 Stud, Outboard	1
2	572, 592A	Bearing Cups	1 ea
3	101160	Serrated Stud M22x1.5	10
4	175032	Drive Stud 0.75 x 3.2	8
5	74756	Shipping Nut	2
6	60864	Brake Drum 16 x 7	1