

No. 234

Date 6/30/90

Another addition to the expanding line of Webb products.

NEW PRODUCT BULLETIN

PART NUMBER: ~~62998~~ **62998**

BRAKE DRUM

SIZE: **16.50 × 7.00**

**AVAILABLE
NOW**

ESTIMATED WEIGHT: **101 Lbs.**

**APPLICATION INFORMATION
HEAVY DUTY TRUCK
DRIVE AXLE**

SERVICE RATING

STANDARD DUTY _____

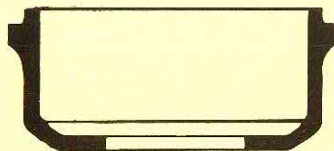
HEAVY DUTY X

EXTRA HEAVY DUTY _____

DIMENSIONAL INFORMATION

BRAKE SURFACE DIAMETER	OVER ALL DEPTH	BRAKE SURFACE FLAT	PILOT DIAMETER	BOLT CIRCLE	BOLT HOLES	
					NUMBER	SIZE
16.50	8.65	7.28	10.50	12.75	5 / 6	.78

TYPE G



DRUM CONFIGURATION

INTERCHANGE INFORMATION

<u>MANUFACTURER</u>	<u>PART NUMBER</u>
DAYTON	123200
FORD	E9HZ-1126-C

INTERCHANGE INFORMATION SHOWN ABOVE IS BASED ON INFORMATION AVAILABLE AT TIME OF PUBLICATION, PORTIONS OF WHICH WERE OBTAINED FROM UNCONFIRMED SOURCES. THEREFORE ACCURACY OF INTERCHANGE INFORMATION CANNOT BE ASSURED.

WEBB WHEEL PRODUCTS, INC.
2310 Industrial Drive, S.W.
Cullman, Alabama 35055
(205) 739-6660
FAX: 205-739-6246