

Another addition to the expanding line of Webb products.

NEW PRODUCT BULLETIN

PART NUMBER: 2328

HUB

**DESCRIPTION: 8 Stud Hub
(10.827 / 275mm Bolt Circle)**

AVAILABLE
JUNE, 1985

WEIGHT: 50 lbs.

APPLICATION INFORMATION
TRAILER AXLE

FEATURES:

- Designed for Pilot Mount Wheels
- Utilizes Two Piece Flange Nut System
- Because of Clamping Force Provided by Flange Nut System All Assemblies are Furnished for Right Hand Threaded Flange Nuts.
- Design of Hub Eliminates Need for Inner Cap Nuts, Allowing for Easier Service Due to Fewer Attaching Parts.
- Designed for Outboard Mount Brake Drums.
- Various Drum/Wheel Combinations Are Obtainable with Different Stud Lengths (See Assembly Print on Reverse Side).

WEBB AXLE GROUP #4

OUTER BEARING CUP HM518410
 CONE HM518445
 INNER BEARING CUP HM518410
 CONE HM518445

AXLE MODELS

FREUHAUF PRO-PAR
 ROCKWELL TP

"A" Hub Part No.	Desc.	"B" Between Cups	"C" Cup To Mtg Face	"D" Cup To End of Drum	"E" Brake Drum		"F" Brake Size		"H" Drum Over All Width	"I" Pilot Dia.	"J" Bolt Circle	"K" Bolt Qty	"L" Hub Cap (Treaded)	Hub Cap Kit	Stud Stand Out 5
					Part No.	Order Code	Dia.	Width							
2328	8 Stud 10.827 BC OB Drum	4.50	1.79	8.80	61576	UE	15.00	7.00	10.59	9.00	10.827	8	6.25 Dia 8UN-2B Thread	Not Avail.	★
				8.83	66875	UF	16.50	7.00	10.62	9.00	10.827	22 MM			

This Bulletin is Designed So That It Can Be Inserted Into Section 3 of Our Current Spoke Wheel and Hub Catalog TBTW384.

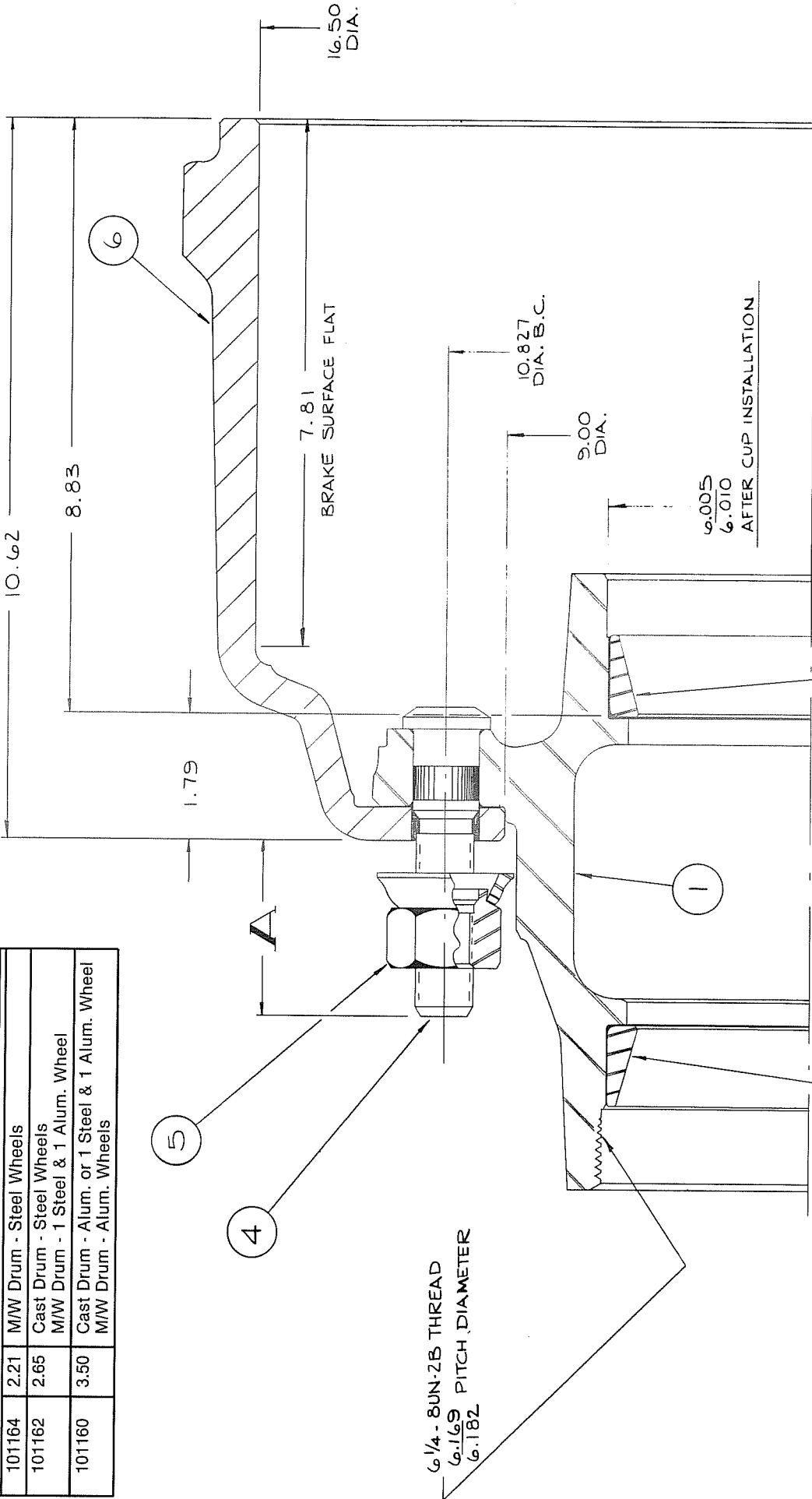
NOTE: Due to the Recent Development of This Style Hub There is No Interchange Information Available.

★ See Reverse Side for Sample Assembly Print Showing All Major Components and Stud Application Chart.



STUD APPLICATION CHART

PART NO.	A	DRUM/WHEEL COMBINATION
101164	2.21	M/W Drum - Steel Wheels
101162	2.65	Cast Drum - Steel Wheels M/W Drum - 1 Steel & 1 Alum. Wheel
101160	3.50	Cast Drum - Alum. or 1 Steel & 1 Alum. Wheel M/W Drum - Alum. Wheels



LIST OF COMPONENTS

ITEM	PART NO.	DESCRIPTION	QTY.
1	2328	Hub - 8 Stud - Outboard	1
2	HM518410	Outer Bearing Cup	1
3	HM518410	Inner Bearing Cup	1
4	See Chart	Serrated Stud - 22 mm x 1.5 R.H. THD.	8
5	179955	Flange Nut - 22 mm x 1.5 R.H. THD.	8
6	66875	Brake Drum - 16.50 x 7.0	1