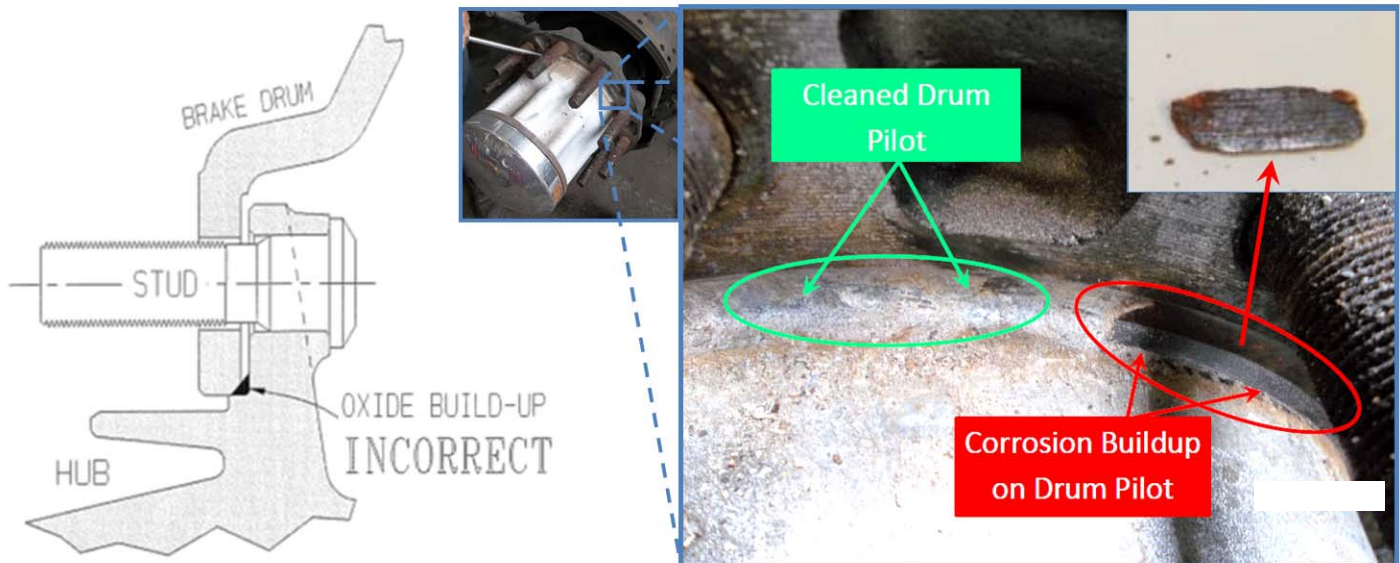




Corrosion on Aluminum Hubs

Corrosion can form on aluminum hubs at the brake drum pilot and will look like a machined surface between the pilot and the flange as seen below. This corrosion MUST be completely removed prior to installing the replacement brake drum. Remove this corrosion by chipping it away then cleaning with a wire brush. Be careful to not damage the aluminum hub when removing the corrosion.



Failure to completely remove the corrosion will prevent the replacement brake drum from properly mating with the hub flange. When the wheel nuts are tightened, the brake drum flange can crack.

For additional information, please refer to TMC RP608B "Brake Drum and Rotors" and Webb's Online Training Toolbox at: http://www.webbwheel.com/aftermarket/training_toolbox.html

If you have any questions, please contact our technical service department at engineering@webbwheel.com.